

**Industrie- und Gewerbepark Eschweiler (IGP/A4-Initiative)**

**Ort: Eschweiler**

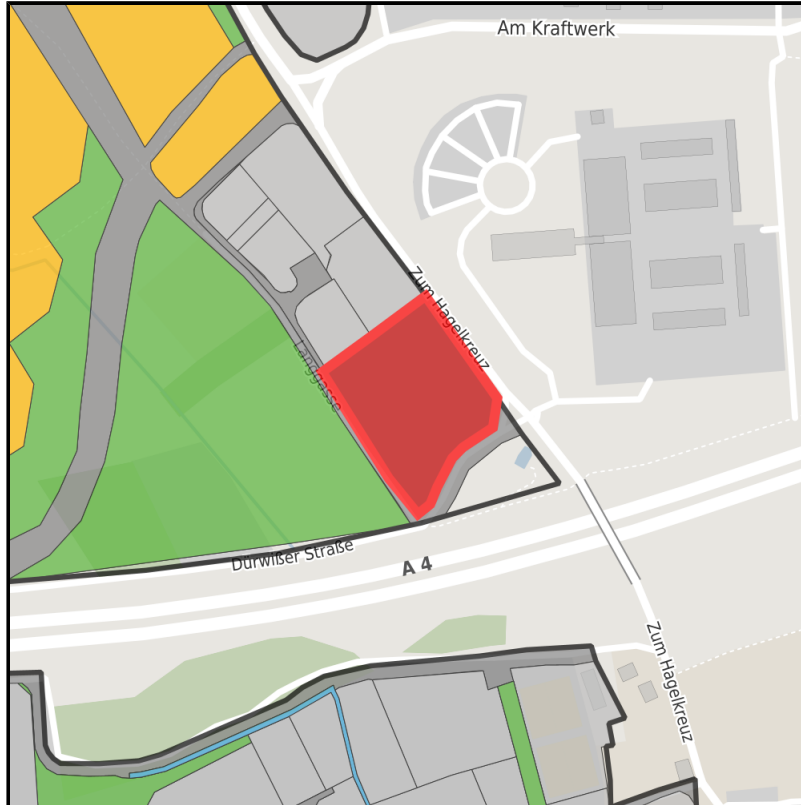
[www.germansite.de](http://www.germansite.de)



Regional overview



Municipal overview



Detail view

**Parcel**

|                  |                            |
|------------------|----------------------------|
| Area size        | 10,306 m <sup>2</sup>      |
| Availability     | Immediately available area |
| Area designation | Commercial zone            |
| Divisible        | No                         |
| 24h operation    | No                         |

**Details on commercial zone**

IGP Eschweiler

## EXPOSÉ

### Industrie- und Gewerbepark Eschweiler (IGP/A4-Initiative)

Ort: Eschweiler

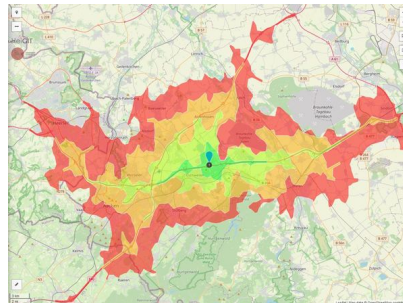
[www.germansite.de](http://www.germansite.de)

Thanks to naturally landscaped surroundings with a generous proportion of green spaces people here have a pleasant working atmosphere and the companies have a representative environment. The IGP has an unusual building development concept: three concentric semi-circles form a group around a center. The inner semi-circle is reserved for service companies, the restaurants/bar and hotel trade. The middle ring is intended for smaller and medium-sized commercial enterprises, and the outer ring for industrial companies.

|                           |   |
|---------------------------|---|
| Main companies            | Fa. Eukalin, Fa. BYTEC Medizintechnik, Fa. Kraftverkehr Nagel,<br>Mercedes Benz |
| Industrial tax multiplier | 490.00 %  |
| Price                     | 75.00 € / m <sup>2</sup>  |
| Area type                 | GE / GI   |

### Links

<https://www.gistra.de>



Erreichbarkeit in 20 Minuten: 759.000  
Einwohner



**Industrie- und Gewerbepark Eschweiler (IGP/A4-Initiative)****Ort: Eschweiler**[www.germansite.de](http://www.germansite.de)**Transport infrastructure**

|              |                                |         |
|--------------|--------------------------------|---------|
| Freeway      | A4                             | 0.1 km  |
| Airport      | Maastricht-Aachen              | 52.6 km |
| Airport      | Köln-Bonn                      | 67.5 km |
| Port         | Binnenhavenweg Stein (NL) (NL) | 51.2 km |
| Port         | Am Godorfer Köln               | 52.4 km |
| Rail freight | Aachen-Hbf                     | 18.6 km |

**Industrie- und Gewerbepark Eschweiler (IGP/A4-Initiative)****Ort: Eschweiler**[www.germansite.de](http://www.germansite.de)**Information about Eschweiler**

Eschweiler lies to the north of the Eifel and is embedded in delightful and densely wooded surroundings.

This excellent location provides short distances to the economic areas the Netherlands and Belgium as well as closeness to first class research centres as the RWTH Aachen University, Aachen University of Applied Sciences and Jülich.

Establishing business premises in Eschweiler you will benefit from a peaceful industry location offering an individual flair of sights surrounded by peaceful green spaces reminding of the history and local stories.



## EXPOSÉ

### Industrie- und Gewerbepark Eschweiler (IGP/A4-Initiative)

Ort: Eschweiler

[www.germansite.de](http://www.germansite.de)

### Contact person

René Schulz

Stadt Eschweiler

Germany

+49 (0)2403/71-452

+49 (0)2403/71-534

[rene.schulz@eschweiler.de](mailto:rene.schulz@eschweiler.de)

<http://www.eschweiler.de>

In cooperation with:



**Aachener Gesellschaft für Technologietransfer und Innovation AGIT mbH**

Frank Leisten

+49(0)241 475773-50

[f.leisten@agit.de](mailto:f.leisten@agit.de)

<http://www.agit.de>