

# EXPOSÉ

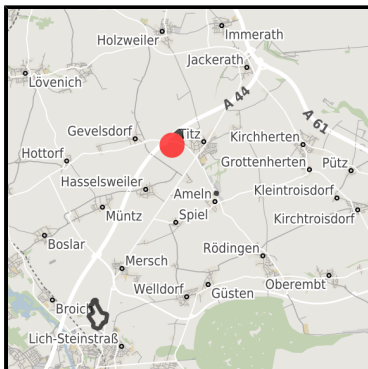
## Gewerbegebiet an der A44

Ort: Titz

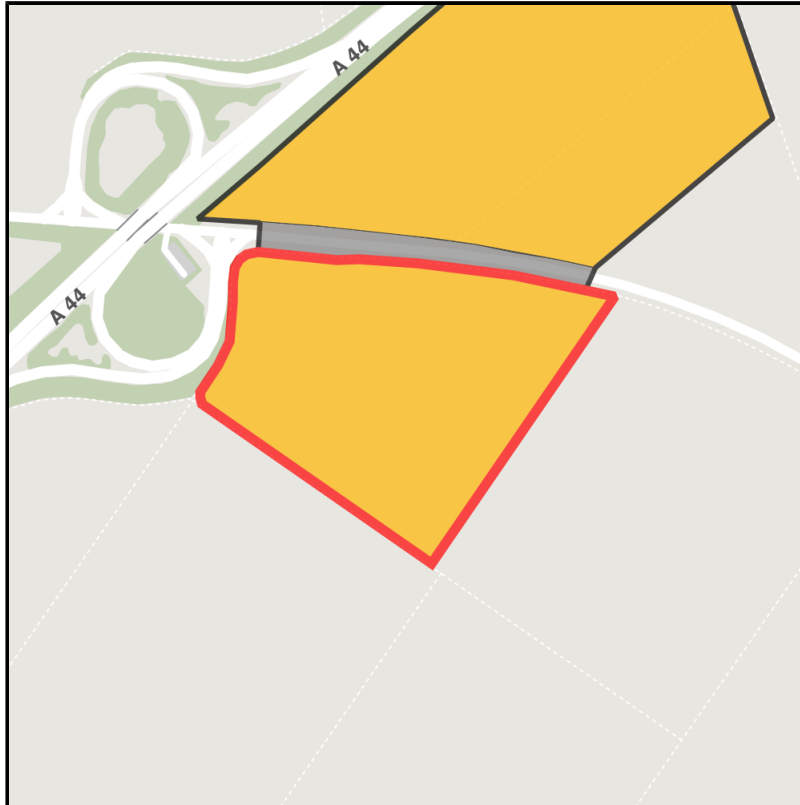
[www.germansite.de](http://www.germansite.de)



Regional overview



Municipal overview



Detail view

### Parcel

Area size	93,820 m <sup>2</sup>
Availability	Available area within medium term (2-5 years)
Divisible	Yes
24h operation	No

## EXPOSÉ

### Gewerbegebiet an der A44

Ort: Titz

### Details on commercial zone

Industrial tax multiplier

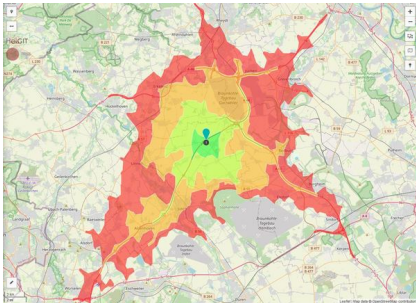
499.00 %

Area type

GE

### Links

<https://www.gistra.de>



Erreichbarkeit in 20 Minuten: 308.000  
Einwohner

### Transport infrastructure

Freeway	A 44	0.5 km
Freeway	A 61	5 km
Airport	Köln-Bonn	68 km
Port	Neuss-Düsseldorf	45 km

## EXPOSÉ

**Gewerbegebiet an der A44**

**Ort: Titz**

### **Information about Titz**

Titz is located midst of transport and economic areas

Köln-Venlo-Düsseldorf-Mönchengladbach-Aachen. Due to its excellent location Titz is a favorable location for business development.

Motorways Aachen-Düsseldorf (A44) and Venlo-Köln(A61) with junction Titz and Jackerath create a perfect traffic connection. Titz has direct access to northwest European industry. Both motorways can be accessed by cross-down link. The industrial zone Titz - Ameln comprises an area of ca. 35 ha which can be divided into bigger and smaller divisions.



## EXPOSÉ

**Gewerbegebiet an der A44**

**Ort: Titz**

### **Contact person**

Ulrike Hintzen

Landgemeinde Titz

Landstraße 4

52445 Titz

Germany

+ 49 (0) 2463/9954-221

+ 49 (0) 2463/9954-999

[ulrike.hintzen@titz.de](mailto:ulrike.hintzen@titz.de)

<http://www.titz.de>

In cooperation with:



**Aachener Gesellschaft für Technologietransfer und Innovation AGIT mbH**

Frank Leisten

+49(0)241 475773-50

[f.leisten@agit.de](mailto:f.leisten@agit.de)

<http://www.agit.de>