

# EXPOSÉ

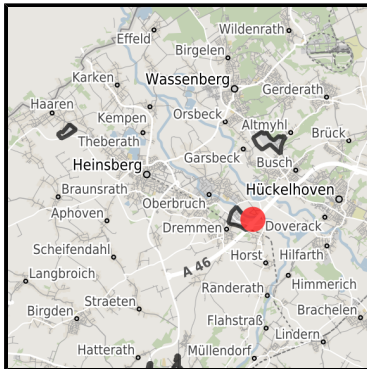
## Gewerbe- und Industriegebiet Dremmen

Ort: Heinsberg

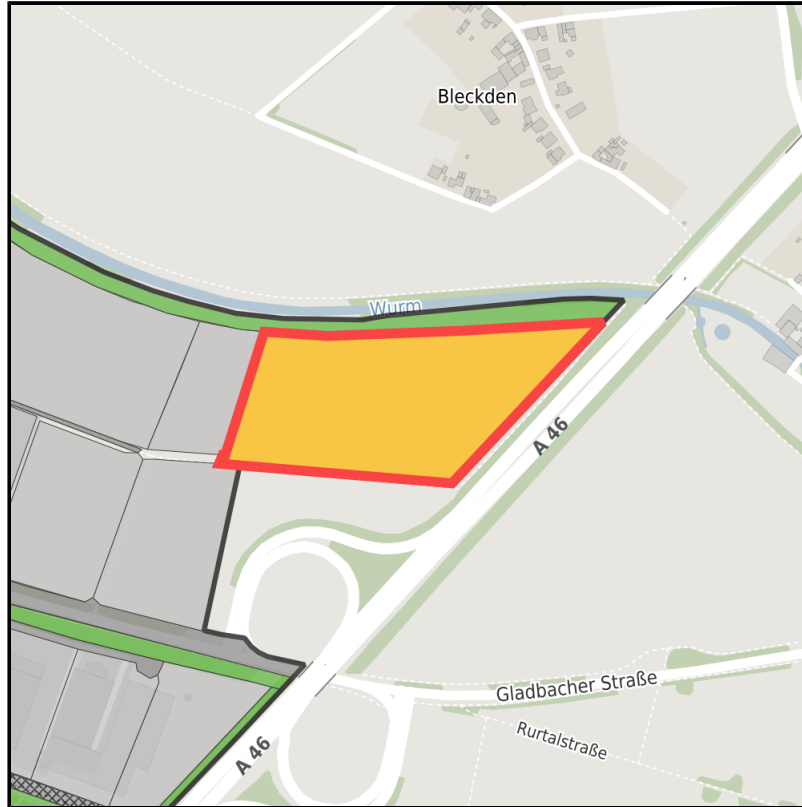
[www.germansite.de](http://www.germansite.de)



Regional overview



Municipal overview



Detail view

### Parcel

Area size	42,653 m <sup>2</sup>
Price	60.00 €/m <sup>2</sup>
Availability	Available area within medium term (2-5 years)
Area designation	Commercial zone
Divisible	No
24h operation	No

## EXPOSÉ

### Gewerbe- und Industriegebiet Dremmen

Ort: Heinsberg

### Details on commercial zone

business and industrial site Dremmen - Your top class location!

The Dremmen commercial and industrial zone provides first-class, supply-side commercial building land for manufacturing companies and selected service providers wishing to invest. The lots can be freely parceled according to the individual requirements of the inquiring companies. A rail connection for freight transport exists.

Industrial tax multiplier

431.00 %

Area type

GE / GI

### Links

<https://wfg-hs.blis-online.eu>



Gewerbe- und Industriegebiet  
Dremmen



Gewerbe- und Industriegebiet  
Dremmen



Gewerbe- und Industriegebiet  
Dremmen

## EXPOSÉ

### Gewerbe- und Industriegebiet Dremmen

Ort: Heinsberg

### Transport infrastructure

Freeway	A46	4.9 km
Airport	Maastrich-Aachen	40.8 km
Airport	Düsseldorf	72.8 km
Port	Holtum-Nordweg Born (NL)	31 km
Port	Binnenhavenweg Stein (NL)	34.5 km
Rail freight	Düsseldorf-Hbf	60.1 km

## Gewerbe- und Industriegebiet Dremmen

Ort: Heinsberg

[www.germansite.de](http://www.germansite.de)

### Information about Heinsberg

Heinsberg is home to high-performance and future-oriented enterprises from all sectors of the economy. A broad industry portfolio composed of production, commerce, crafting, service and public authority sectors have settled.

An intact residential environment, various leisure facilities and constant optimisations to the infrastructure attract people and business enterprises likewise.

The Heinsberg site offers huge space for industrial settlement and investment and subsidies up to 20% of the invest for smes are possible.



## EXPOSÉ

**Gewerbe- und Industriegebiet Dremmen**

**Ort: Heinsberg**

### **Contact person**

Michael Dahmen

Stadt Heinsberg

Apfelstraße 60

52525 Heinsberg

Germany

+49 (0)2452 14-8010

+49 (0)2452 14-1095

[wirtschaftsfoerderung@heinsberg.de](mailto:wirtschaftsfoerderung@heinsberg.de)

<http://www.heinsberg.de>