

# EXPOSÉ

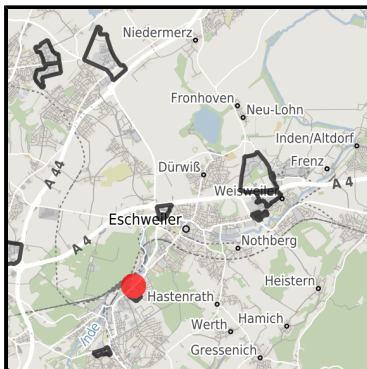
## Gewerbegebiet Stolberger Straße

Ort: Eschweiler

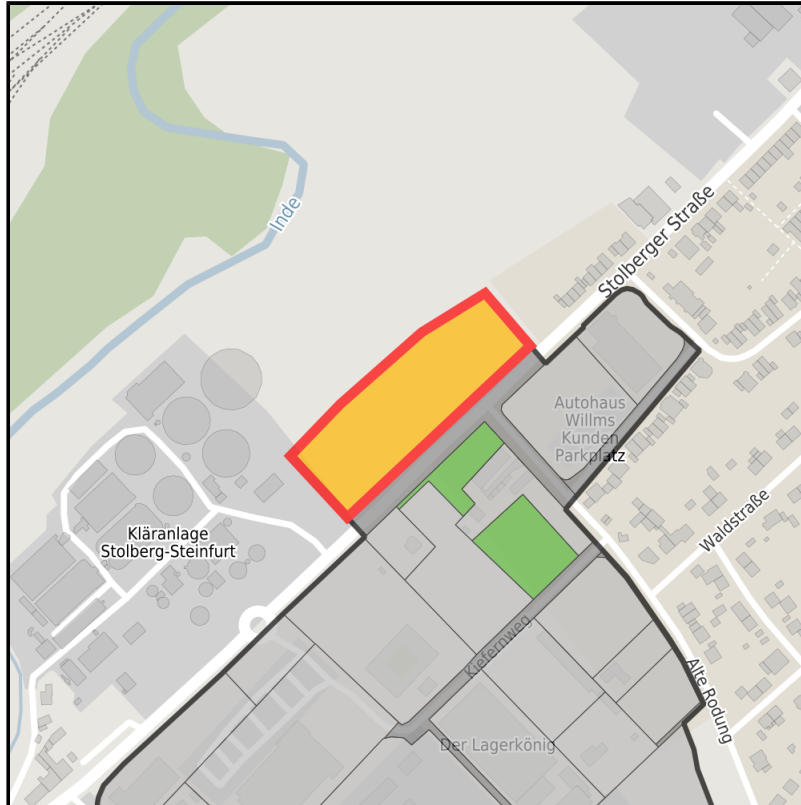
[www.germansite.de](http://www.germansite.de)



Regional overview



Municipal overview



Detail view

### Parcel

Area size	11,931 m <sup>2</sup>
Availability	Available area within medium term (2-5 years)
Area designation	Commercial zone
Divisible	No
24h operation	No

### Details on commercial zone

Industrial tax multiplier	430.00 %
Area type	GI / GE

### Links

<https://www.gistra.de>

## EXPOSÉ

**Gewerbegebiet Stolberger Straße**

**Ort: Eschweiler**

### **Transport infrastructure**

Freeway	A4	5 km
Freeway	A44	7 km
Airport	Maastricht-Aachen	50 km
Airport	Köln-Bonn	70 km
Port	Born (NL)	50 km
Port	Köln	60 km
Rail freight	Kraftwerk Weisweiler	10 km

## EXPOSÉ

**Gewerbegebiet Stolberger Straße**

**Ort: Eschweiler**

### **Information about Eschweiler**

Eschweiler lies to the north of the Eifel and is embedded in delightful and densely wooded surroundings.

This excellent location provides short distances to the economic areas the Netherlands and Belgium as well as closeness to first class research centres as the RWTH Aachen University, Aachen University of Applied Sciences and Jülich.

Establishing business premises in Eschweiler you will benefit from a peaceful industry location offering an individual flair of sights surrounded by peaceful green spaces reminding of the history and local stories.



## EXPOSÉ

**Gewerbegebiet Stolberger Straße**

**Ort: Eschweiler**

**GERMAN.SITE**  
SITES AND REAL ESTATE

[www.germansite.de](http://www.germansite.de)

### Contact person

René Schulz

Stadt Eschweiler

Germany

+49 (0)2403/71-452

+49 (0)2403/71-534

[rene.schulz@eschweiler.de](mailto:rene.schulz@eschweiler.de)

<http://www.eschweiler.de>

In cooperation with:



**Aachener Gesellschaft für Technologietransfer und Innovation AGIT mbH**

Frank Leisten

+49(0)241 475773-50

[f.leisten@agit.de](mailto:f.leisten@agit.de)

<http://www.agit.de>