

## EXPOSÉ

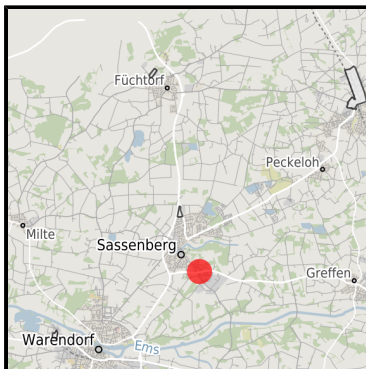
### Gewerbegebiet Graffelder Esch

Ort: Sassenberg

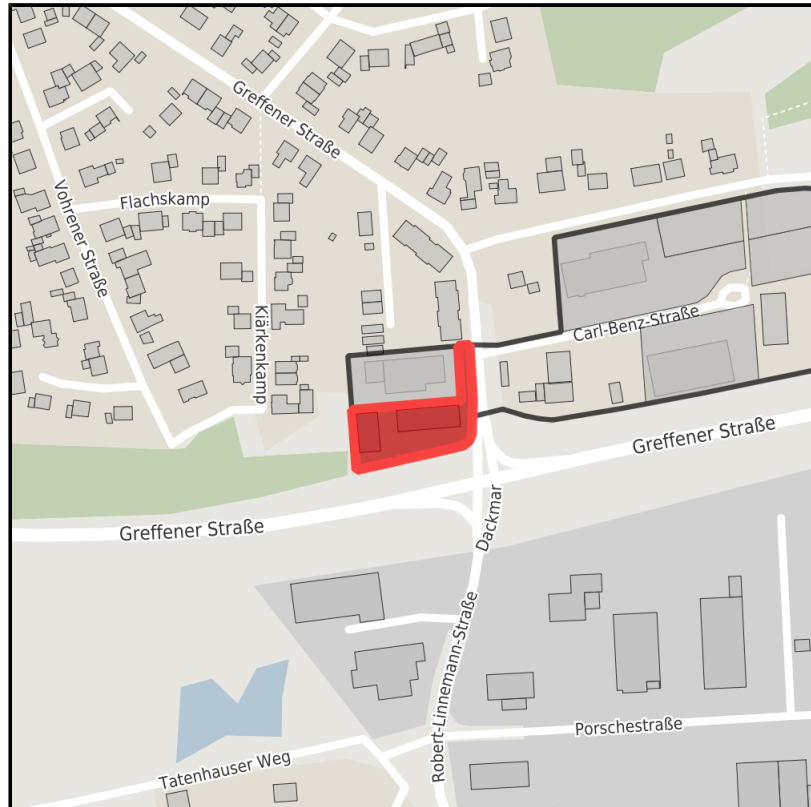
www.germansite.de



Regional overview



Municipal overview



Detail view

### Parcel

Area size	2,461 m <sup>2</sup>
Availability	Immediately available area
Divisible	No
24h operation	No

### Details on commercial zone

Business park Graffelder Esch

Commercial zone "Graffelder Esch" at the bypass B 513 Greffen - Gütersloh, quiet central location for the residential area.

Area type	GE
Specifics	Note on use: Commercial and residential

## EXPOSÉ

### Gewerbegebiet Graffelder Esch

Ort: Sassenberg

### Transport infrastructure

Freeway	A1 u. A2	25 km
Airport	Münster / Osnabrück	30 km
Port	nein	0 km

### Contact person

Guido Holtkämper  
Stadt Sassenberg  
Schürenstr. 17  
48336 Sassenberg  
Germany  
+49 (0)2583/309-404-0  
+49 (0)583/309-880-0  
[holtkaemper@sassenberg.de](mailto:holtkaemper@sassenberg.de)  
<http://www.sassenberg.de>

In cooperation with:



**Münsterland e.V.**

**Münsterland e.V.**  
**Deutschland**

Ute Schmidt-Vöcks  
+49 (0) 2571 949 321  
+49 (0) 2571 949 381  
[info@muensterland.com](mailto:info@muensterland.com)  
<http://www.muensterland.com>