

# EXPOSÉ

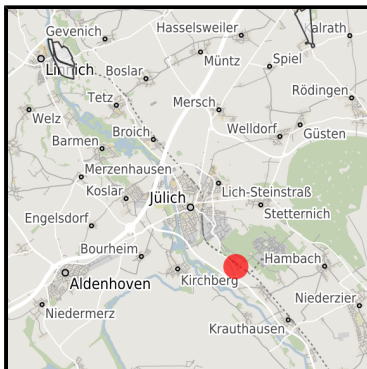
## Gewerbe- und Industriegebiet Jülich-Süd (Waldstraße)

Ort: Jülich

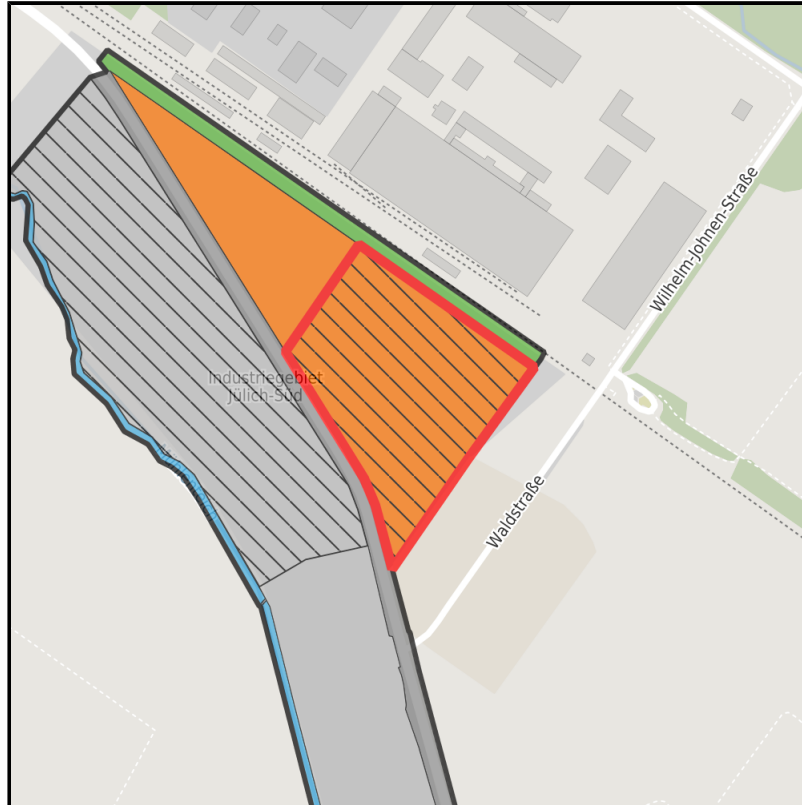
[www.germansite.de](http://www.germansite.de)



Regional overview



Municipal overview



Detail view

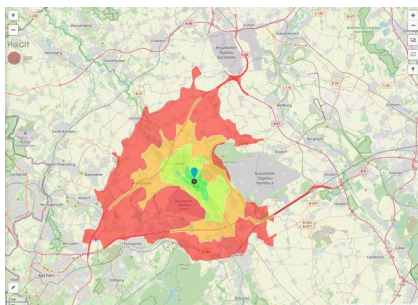
### Parcel

Area size	29,919 m <sup>2</sup>
Availability	Available area within short term (< 2 years)
Divisible	Yes
24h operation	No

**Gewerbe- und Industriegebiet Jülich-Süd (Waldstraße)****Ort: Jülich**[www.germansite.de](http://www.germansite.de)**Details on commercial zone**

The Jülich-Süd industrial park is in the immediate vicinity of the Forschungszentrum Jülich and has a direct rail connection. The northern section is available immediately. The site is partly in public ownership and partly private. A development plan is already available (industrial zone designation).

Main industry sector	Standalone location for paper processing or manufacturing industry
Main companies	Gissler & Pass
Industrial tax multiplier	438.00 %
Price	13.00 € / m <sup>2</sup>
Area type	GE

**Links**<https://www.gistra.de>

Erreichbarkeit in 20 Minuten: 183.000  
Einwohner

**Transport infrastructure**

Freeway	A44	5 km
Freeway	A4	10 km
Airport	Köln-Bonn	55 km
Port	Köln	50 km
Rail freight	Düren	10 km

## EXPOSÉ

### Gewerbe- und Industriegebiet Jülich-Süd (Waldstraße)

Ort: Jülich

[www.germansite.de](http://www.germansite.de)

### Information about Jülich

Jülich is a town with a unique research and development potential that can be found at only a few locations around the world:

The Jülich Research Centre with 4,300 employees is the biggest German research institution .

Jülich is a self-confident medium-sized centre with a wide range of shops, restaurants and cafés in a attractive townscape attractive development areas with residential plots at favourable prices culture and ambience through a multitude of new exhibitions, theatres and concerts, The Citadel Museum and the ?Brückenkopfpark Jülich?.



## EXPOSÉ

**Gewerbe- und Industriegebiet Jülich-Süd (Waldstraße)**

**Ort: Jülich**

**GERMAN.SITE**  
SITES AND REAL ESTATE

[www.germansite.de](http://www.germansite.de)

### Contact person

Frank Drewes

Stadt Jülich

Germany

+49 (0)2461/ 63-434

+49 (0)2461-63-434

[FDrewes@juelich.de](mailto:FDrewes@juelich.de)

<http://www.juelich.de>

In cooperation with:



**Aachener Gesellschaft für Technologietransfer und Innovation AGIT mbH**

Frank Leisten

+49(0)241 963-1050

+49(0)241 963-1033

[f.leisten@agit.de](mailto:f.leisten@agit.de)

<http://www.agit.de>