

EXPOSÉ

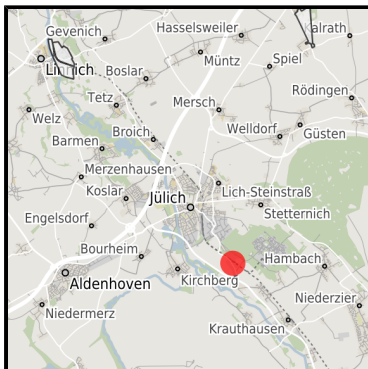
Gewerbe- und Industriegebiet Jülich-Süd (Waldstraße)

Ort: Jülich

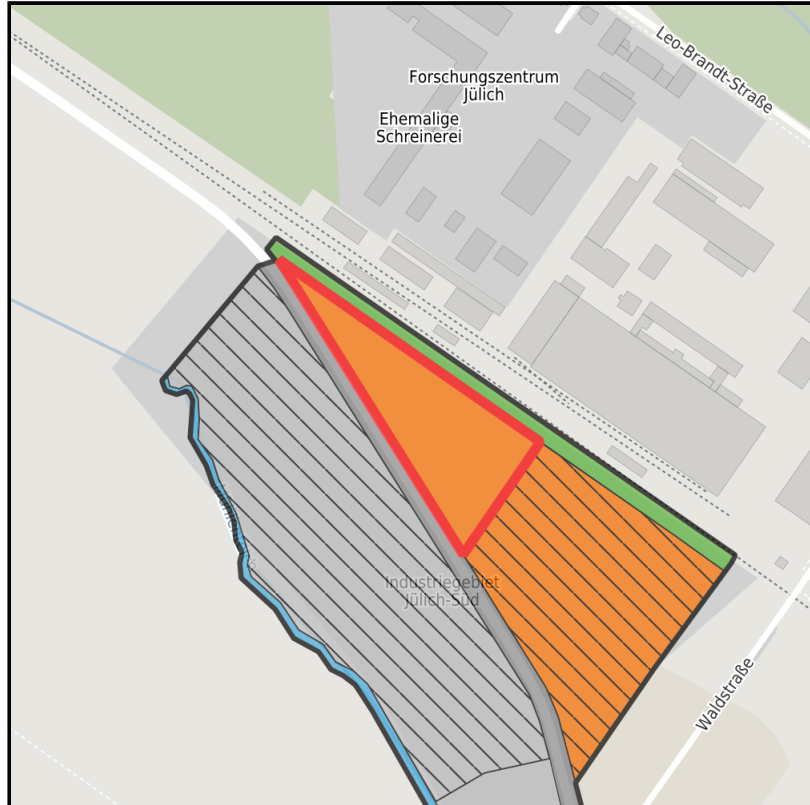
www.germansite.de



Regional overview



Municipal overview



Detail view

Parcel

Area size	15,480 m ²
Availability	Available area within short term (< 2 years)
Divisible	Yes
24h operation	No

EXPOSÉ

Gewerbe- und Industriegebiet Jülich-Süd (Waldstraße)

Ort: Jülich

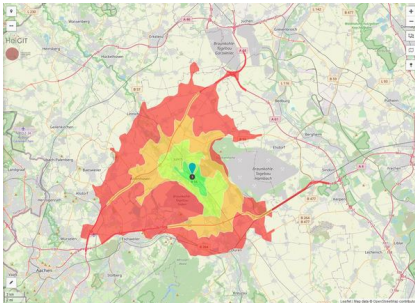
www.germansite.de

Details on commercial zone

Main companies	Gissler & Pass
Industrial tax multiplier	438.00 %
Price	13.00 € / m ²
Area type	GE

Links

<https://www.gistra.de>



Erreichbarkeit in 20 Minuten: 183.000
Einwohner

Transport infrastructure

Freeway	A44	5 km
Freeway	A4	10 km
Airport	Köln-Bonn	55 km
Port	Köln	50 km
Rail freight	Düren	10 km

EXPOSÉ

Gewerbe- und Industriegebiet Jülich-Süd (Waldstraße)

Ort: Jülich

www.germansite.de

Information about Jülich

Jülich is a town with a unique research and development potential that can be found at only a few locations around the world:

The Jülich Research Centre with 4,300 employees is the biggest German research institution .

Jülich is a self-confident medium-sized centre with a wide range of shops, restaurants and cafés in a attractive townscape attractive development areas with residential plots at favourable prices culture and ambience through a multitude of new exhibitions, theatres and concerts, The Citadel Museum and the ?Brückenkopfpark Jülich?.



EXPOSÉ

Gewerbe- und Industriegebiet Jülich-Süd (Waldstraße)

Ort: Jülich

Contact person

Frank Drewes
Stadt Jülich
Germany
+49 (0)2461/ 63-434
+49 (0)2461-63-434
FDrewes@juelich.de
<http://www.juelich.de>

In cooperation with:



Aachener Gesellschaft für Technologietransfer und Innovation AGIT mbH

Frank Leisten
+49(0)241 963-1050
+49(0)241 963-1033
f.leisten@agit.de
<http://www.agit.de>