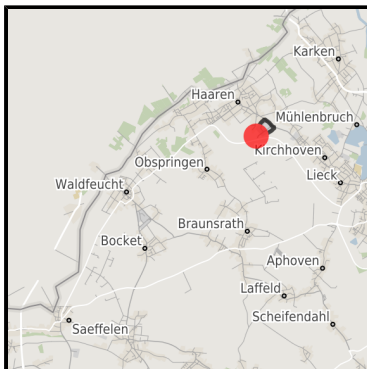
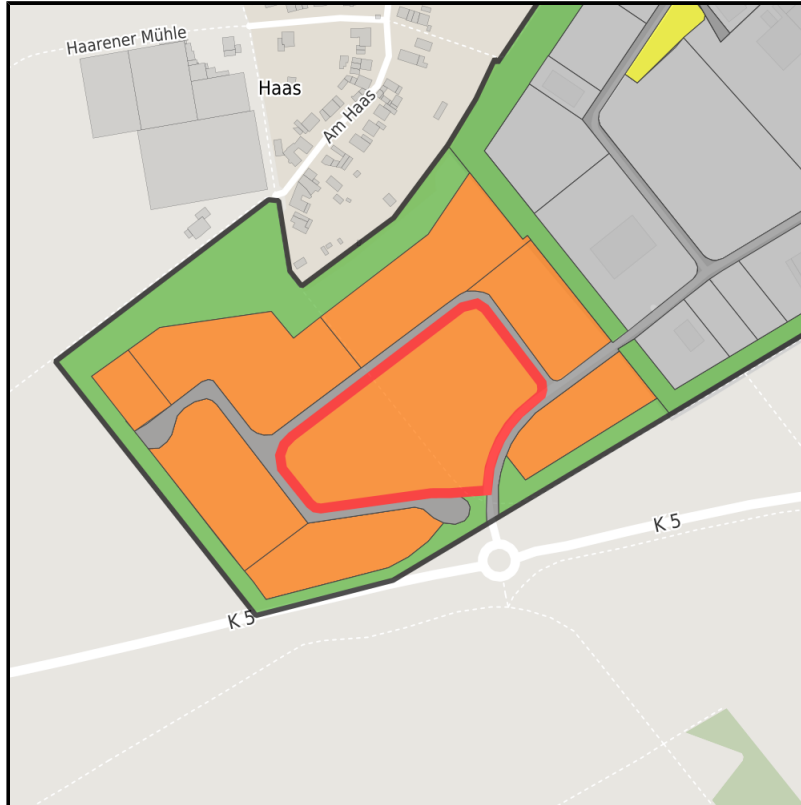




Regional overview



Municipal overview



Detail view

## Parcel

|               |  |
|---------------|--|
| Area size     | 19,000 m <sup>2</sup>                        |
| Availability  | Available area within short term (< 2 years) |
| Divisible     | No   |
| 24h operation | No   |

**Gewerbegebiet Haaren****Ort: Waldfeucht**[www.germansite.de](http://www.germansite.de)**Details on commercial zone**

The mix makes the difference ....Industries in the Haaren industrial estate

Numerous companies are located in the approx. 146,000 m<sup>2</sup> Waldfeucht-Haaren industrial and commercial area, including a gas station, a construction company, an ice production company, a container service, a painting and decorating company, a bus company, a heating and plumbing company and a company for the production of windows, doors and conservatories.

|                           |                               |
|---------------------------|-------------------------------|
| Main industry sector      | ice cream factory             |
| Main companies            | Rosen Eiskrem GmbH            |
| Industrial tax multiplier | 421.00 %                      |
| Price                     | from 40.00 € / m <sup>2</sup> |
| Area type                 | GE                            |

**Links**

<https://wfg-hs.blis-online.eu>

**Transport infrastructure**

|              |               |       |
|--------------|---------------|-------|
| Freeway      | A2 (NL)       | 10 km |
| Airport      | Düsseldorf    | 25 km |
| Port         | Born (NL)     | 12 km |
| Rail freight | Geilenkirchen | 17 km |

**Information about Waldfeucht**

The Waldfeucht-Bocket commercial zone covers 145,000 m<sup>2</sup> and is home to many companies, including retail firms, a specialist model-making store, a construction and wrought ironwork business, a manufacturing company for PVC windows, doors, and roller blinds, a joinery, a roofing business, a construction company, a taxi dispatch center, a car dealership, a saddlery, a plastering and stucco business, an airbrush firm, and a distribution company for construction steel and building components. Recent additions were a beverage & drug store, a civil engineering company, and a waste disposal business.

## EXPOSÉ

**Gewerbegebiet Haaren**

**Ort: Waldfeucht**

### **Contact person**

Heinz-Josef Schrammen

Gemeinde Waldfeucht

Germany

+49 (0)2455/399-10

+49 (0)2455/40777-11

[hj.schrammen@waldfeucht.de](mailto:hj.schrammen@waldfeucht.de)

<http://www.waldfeucht.de>