

EXPOSÉ

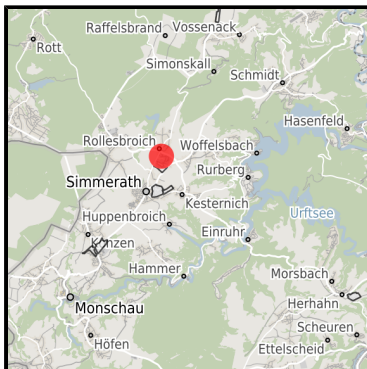
Gewerbe- und Industriegebiet Rollesbroich

Ort: Simmerath

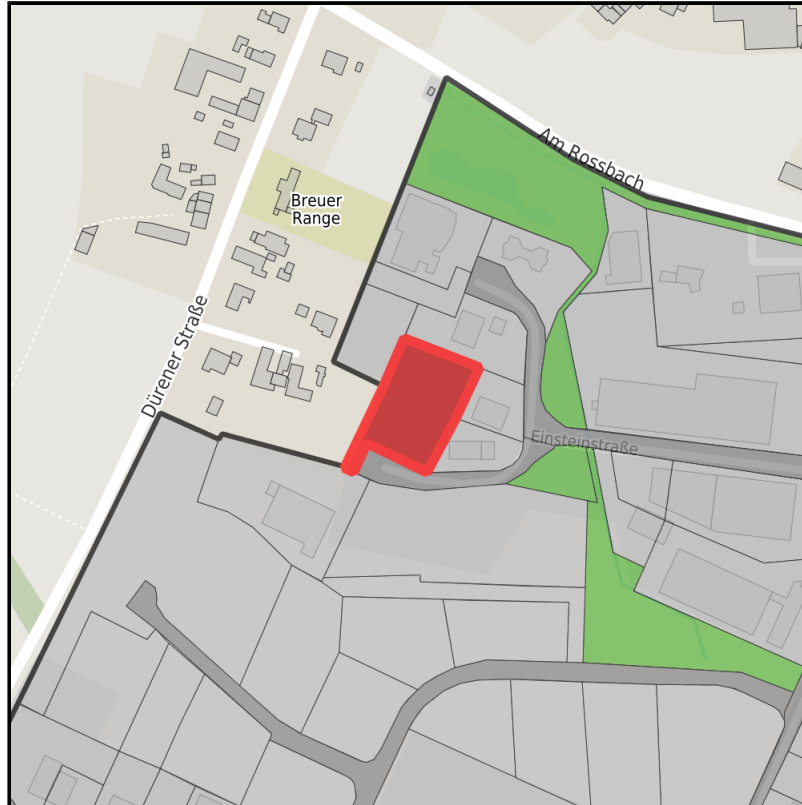
www.germansite.de



Regional overview



Municipal overview



Detail view

Parcel

Area size	3,500 m ²
Availability	Immediately available area
Area designation	Commercial zone
Divisible	Yes
24h operation	No

Gewerbe- und Industriegebiet Rollesbroich**Ort: Simmerath**www.germansite.de**Details on commercial zone**

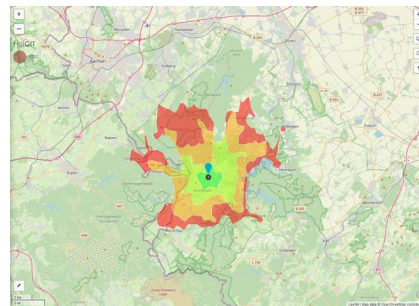
Rollesbroich

Since 1989 over 35 businesses have benefited from the locational advantages in the Rollesbroich commercial and industrial zone. By employing needs-oriented space development the location focuses on continuous growth. The dimensions of the commercial lots can be adapted to the companies' needs. SMEs in particular value the innovative milieu which has established itself above all since the start-up and service center was opened in 2002.

Main companies	Fa. Schwarz, Fa. SEM Stollenwerk Elektro- und Maschinenbau GmbH, Fa. WINK
Industrial tax multiplier	445.00 %
Price	23.00 € / m ²
Area type	GE / GI

Links<https://www.gistra.de>

GW_Rollesbroich.jpg

Erreichbarkeit in 20 Minuten: 41.000
Einwohner

Gewerbe- und Industriegebiet Rollesbroich

Ort: Simmerath

www.germansite.de

Transport infrastructure

Freeway	A44	20.8 km
Airport	Maastrich-Aachen	74.8 km
Airport	Liège (B)	77.1 km
Port	Liège (B)	64.4 km
Port	Binnenhavenweg Stein (NL)	70.5 km

Information about Simmerath

Simmerath represents an ambitious and modern community with 15,000 inhabitants. Located in the southern part of the Aachen region Simmerath is an interesting investment opportunity with excellent connection to the Netherlands, Belgium, Aachen and Cologne. Establishing, investing and expanding business in Simmerath is supported by governmental programs in order to strengthen industry structure. Majestic beech forests, gnarled oak trees and wild rivers: Experience pure nature in the Eifel National Park. Enhance working creativity surrounded by inspiring nature.



EXPOSÉ

Gewerbe- und Industriegebiet Rollesbroich

Ort: Simmerath

GERMAN.SITE
SITES AND REAL ESTATE

www.germansite.de

Contact person

André Koll

Gemeinde Simmerath

Germany

+ 49 (0) 24 73/607 174

+49 (0)2473/607100

akoll@gemeinde.simmerath.de

<http://www.simmerath.de>

In cooperation with:



Aachener Gesellschaft für Technologietransfer und Innovation AGIT mbH

Frank Leisten

+49(0)241 963-1050

+49(0)241 963-1033

f.leisten@agit.de

<http://www.agit.de>