

EXPOSÉ

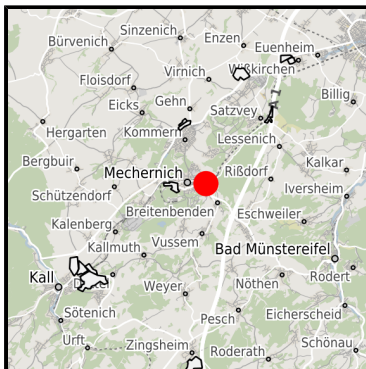
Mischgebiet Vierwege / Auf dem Rücken

Ort: Mechernich

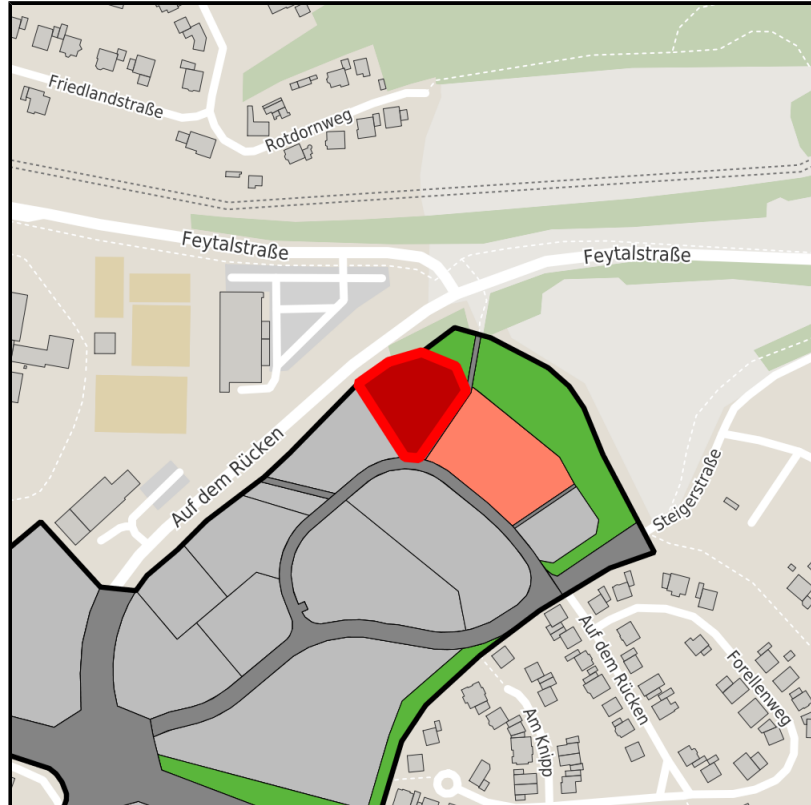
www.germansite.de



Regional overview



Municipal overview



Detail view

Parcel

Area size	2,427 m ²
Availability	Immediately available area
Area designation	Mixed use area
Divisible	Yes
24h operation	No

EXPOSÉ

Mischgebiet Vierwege / Auf dem Rücken

Ort: Mechernich

www.germansite.de

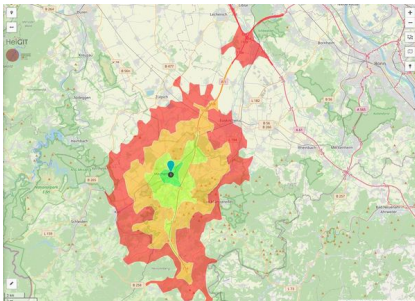
Details on commercial zone

The approx. 8-hectare mixed use area is located on the eastern edge of the Mechernich town center. The A1 motorway can be reached via the L 165 in less than three minutes, Mechernich railway station is only 2 km away. The industry structure is characterized by retail and service companies as well as gastronomy. Due to its designation under building law as a mixed use area, the location is primarily suitable for non-disruptive commercial enterprises and service companies.

Main companies	Aldi
Industrial tax multiplier	423.00 %
Price	77.00 € / m ²
Area type	MI

Links

<https://www.gistra.de>



Erreichbarkeit in 20 Minuten: 104.000
Einwohner

Transport infrastructure

Freeway	A1	2.6 km
Airport	Köln-Bonn	61.4 km
Airport	Düsseldorf	109 km
Port	Am Godorfer Köln	46 km
Port	Köln Niehl	60.5 km

EXPOSÉ

Mischgebiet Vierwege / Auf dem Rücken

Ort: Mechernich

Information about Mechernich

Because of its central position and a favorable traffic connection, Mechernich serves as a node for various industries and service companies. The Eifel region with its beautiful countryside is undoubtedly an area of high recreational value - Mechernich in particular offers a great deal in terms of leisure and culture.



EXPOSÉ

Mischgebiet Vierwege / Auf dem Rücken

Ort: Mechernich

Contact person

Peter Dierichsweiler

Stadt Mechernich

Bergstraße 1

53894 Mechernich

Germany

+49 (0)2443-494220

+49 (0)2443-495220

p.dierichsweiler@mechernich.de

<http://www.mechernich.de>

In cooperation with:



Aachener Gesellschaft für Technologietransfer und Innovation AGIT mbH

Frank Leisten

+49(0)241 963-1050

+49(0)241 963-1033

f.leisten@agit.de

<http://www.agit.de>