

## EXPOSÉ

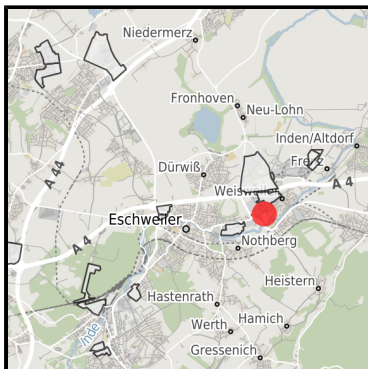
### Gewerbegebiet Südlich Elektrowerk

Ort: Eschweiler

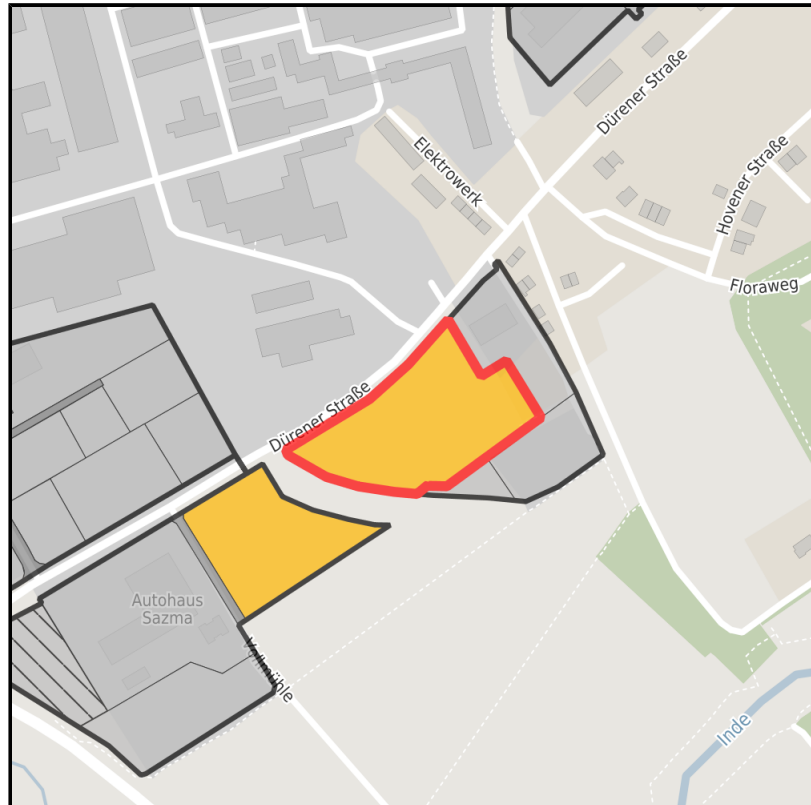
[www.germansite.de](http://www.germansite.de)



Regional overview



Municipal overview



Detail view

### Parcel

Area size	12,940 m <sup>2</sup>
Availability	Available area within medium term (2-5 years)
Area designation	Commercial zone
Divisible	No
24h operation	No

## EXPOSÉ

### Gewerbegebiet Südlich Elektrowerk

Ort: Eschweiler

[www.germansite.de](http://www.germansite.de)

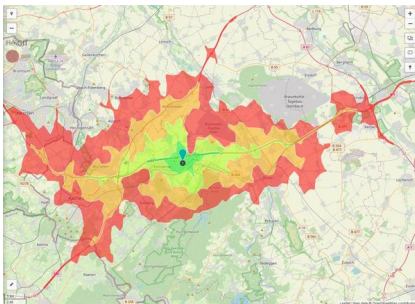
### Details on commercial zone

The commercial zone is located in the immediate vicinity of the A 4 Eschweiler-Ost freeway access and the L 11n, which is a short distance from the A 44 freeway. The connection to public transport is also guaranteed by bus and Euregiobahn.

Main industry sector	None
Industrial tax multiplier	430.00 %
Price	41.00 - 51.00 € / m <sup>2</sup>
Area type	GE

### Links

<https://www.gistra.de>



Erreichbarkeit in 20 Minuten: 610.000  
Einwohner

### Transport infrastructure

Freeway	A4	2 km
Freeway	A44	4 km
Airport	Maastricht-Aachen	50 km
Airport	Köln-Bonn	70 km
Port	Born (NL)	50 km
Port	Köln	60 km
Rail freight	Kraftwerk Weisweiler	0 km

## EXPOSÉ

### Gewerbegebiet Südlich Elektrowerk

Ort: Eschweiler

### Information about Eschweiler

Eschweiler lies to the north of the Eifel and is embedded in delightful and densely wooded surroundings.

This excellent location provides short distances to the economic areas the Netherlands and Belgium as well as closeness to first class research centres as the RWTH Aachen University, Aachen University of Applied Sciences and Jülich.

Establishing business premises in Eschweiler you will benefit from a peaceful industry location offering an individual flair of sights surrounded by peaceful green spaces reminding of the history and local stories.



## EXPOSÉ

**Gewerbegebiet Südlich Elektrowerk**

**Ort: Eschweiler**

**GERMAN.SITE**  
SITES AND REAL ESTATE

[www.germansite.de](http://www.germansite.de)

### Contact person

Dieter Kamp

Stadt Eschweiler

Germany

+49 (0)2403/71-294

+49 (0)2403/71-534

[dieter.kamp@eschweiler.de](mailto:dieter.kamp@eschweiler.de)

<http://www.eschweiler.de>

In cooperation with:



**Aachener Gesellschaft für Technologietransfer und Innovation AGIT mbH**

Frank Leisten

+49(0)241 963-1050

+49(0)241 963-1033

[f.leisten@agit.de](mailto:f.leisten@agit.de)

<http://www.agit.de>