

EXPOSÉ

Nirm

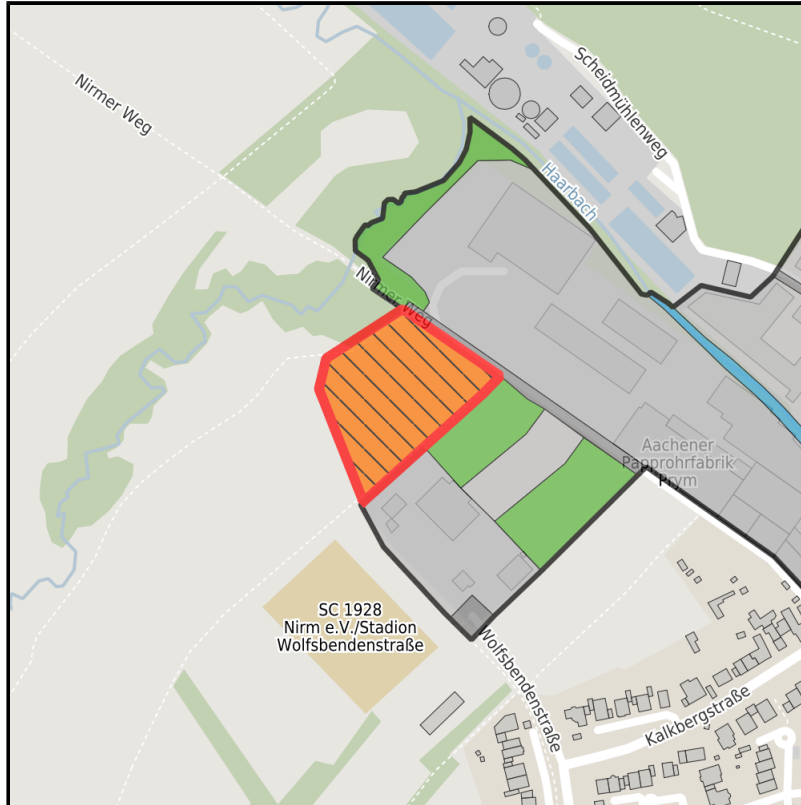
Ort: Aachen



Regional overview



Municipal overview



Detail view

Parcel

| | |
|------------------|----------------------------------------------|
| Area size | 8,760 m ² |
| Availability | Available area within short term (< 2 years) |
| Area designation | Commercial zone |
| Divisible | No |
| 24h operation | No |

EXPOSÉ

Nirm

Ort: Aachen

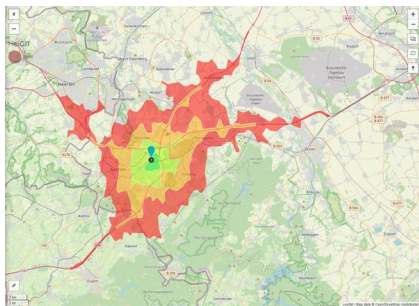
Details on commercial zone

Area type

GE

Links

<https://www.gistra.de>



Erreichbarkeit in 20 Minuten: 412.000
Einwohner

Transport infrastructure

| | | |
|--------------|-------------------|--------|
| Freeway | A544 | 2 km |
| Freeway | A44 | 3 km |
| Airport | Maastricht-Aachen | 35 km |
| Airport | Köln-Bonn | 90 km |
| Port | Liège (B) | 40 km |
| Port | Duisburg | 115 km |
| Rail freight | AC-West | 8 km |

EXPOSÉ

Nirm

Ort: Aachen

Information about Aachen

Aachen's successful economy is indicated by the number of high-tech companies within the region. It would be difficult to find such a concentration and variety of technical and scientific potential in any other region of Europe. Research and instruction at the highest level are provided by five centres of higher education, including the world famous RWTH Aachen University. In addition Aachen has four Fraunhofer Institutes and the largest university clinic in Europe.



EXPOSÉ

Nirm

Ort: Aachen

Contact person

Sascha Nepomuck

Stadt Aachen

Immobilienmanagement

Germany

+49 (0)241/432-2328

+49 (0)241/432-2399

Sascha.Nepomuck@mail.aachen.de

<http://www.aachen.de>

In cooperation with:



Aachener Gesellschaft für Technologietransfer und Innovation AGIT mbH

Frank Leisten

+49(0)241 963-1050

+49(0)241 963-1033

f.leisten@agit.de

<http://www.agit.de>