

# EXPOSÉ

Nirm

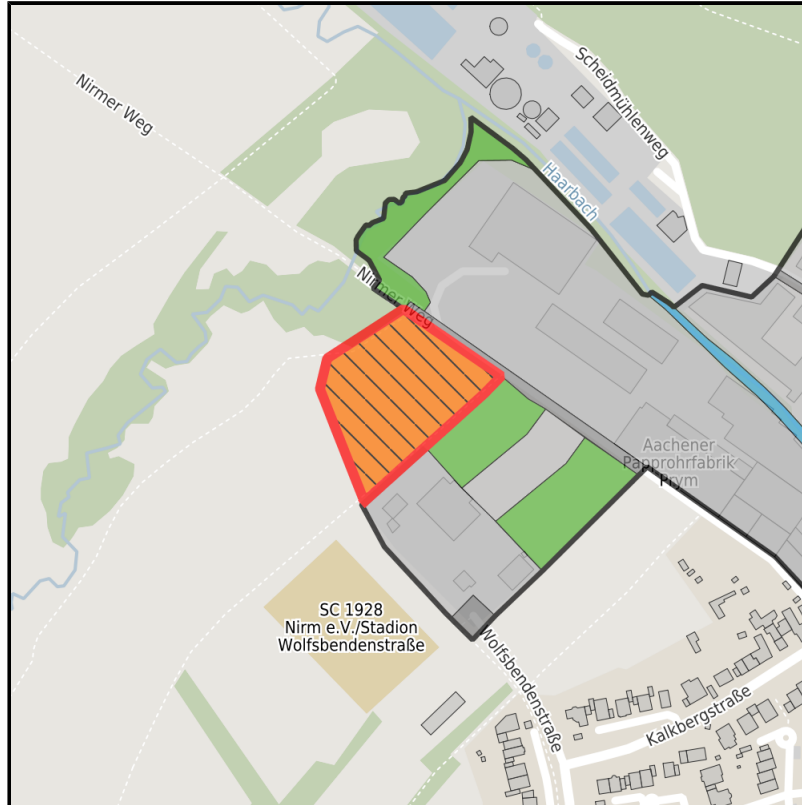
Ort: Aachen



Regional overview



Municipal overview



Detail view

## Parcel

Area size	8,760 m <sup>2</sup>
Availability	Available area within short term (< 2 years)
Area designation	Commercial zone
Divisible	No
24h operation	No

## EXPOSÉ

Nirm

Ort: Aachen

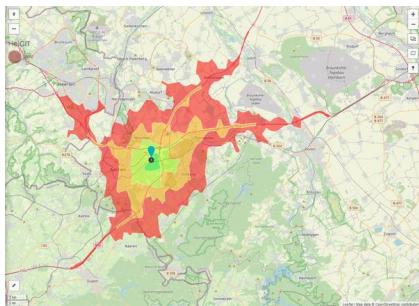
### Details on commercial zone

Area type

GE

### Links

<https://www.gistra.de>



Erreichbarkeit in 20 Minuten: 412.000  
Einwohner

### Transport infrastructure

Freeway	A544	2 km
Freeway	A44	3 km
Airport	Maastricht-Aachen	35 km
Airport	Köln-Bonn	90 km
Port	Liège (B)	40 km
Port	Duisburg	115 km
Rail freight	AC-West	8 km

## EXPOSÉ

Nirm

Ort: Aachen

### Information about Aachen

Aachen's successful economy is indicated by the number of high-tech companies within the region. It would be difficult to find such a concentration and variety of technical and scientific potential in any other region of Europe. Research and instruction at the highest level are provided by five centres of higher education, including the world famous RWTH Aachen University. In addition Aachen has four Fraunhofer Institutes and the largest university clinic in Europe.



## EXPOSÉ

**Nirm**

**Ort: Aachen**

### **Contact person**

Sascha Nepomuck

Stadt Aachen

Immobilienmanagement

Germany

+49 (0)241/432-2328

+49 (0)241/432-2399

[Sascha.Nepomuck@mail.aachen.de](mailto:Sascha.Nepomuck@mail.aachen.de)

<http://www.aachen.de>

In cooperation with:



**Aachener Gesellschaft für Technologietransfer und Innovation AGIT mbH**

Frank Leisten

+49(0)241 963-1050

+49(0)241 963-1033

[f.leisten@agit.de](mailto:f.leisten@agit.de)

<http://www.agit.de>