

# EXPOSÉ

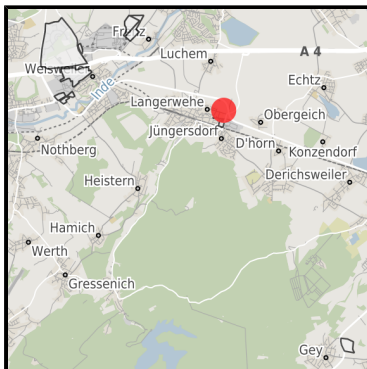
## Gewerbegebiet Am Steinchen

Ort: Langerwehe

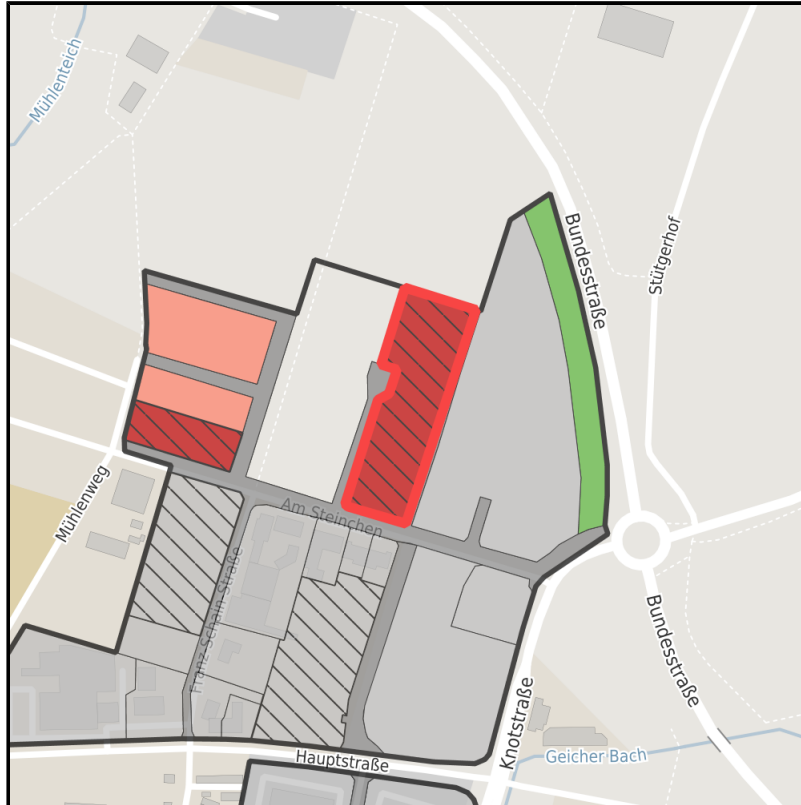
[www.germansite.de](http://www.germansite.de)



Regional overview



Municipal overview



Detail view

### Parcel

Area size	8,200 m <sup>2</sup>
Availability	Immediately available area
Area designation	Commercial zone
Divisible	Yes
24h operation	No

## Gewerbegebiet Am Steinchen

Ort: Langerwehe

[www.germansite.de](http://www.germansite.de)

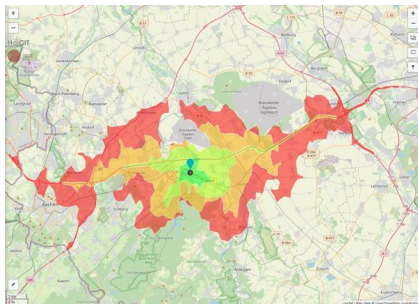
### Details on commercial zone

The municipality of Langerwehe has designated the commercial zone "Am Steinchen" on the eastern edge of the core municipality of Langerwehe. The B 264 highway is in the immediate vicinity, as well as the freeway connection which makes the A4 freeway very easy to reach. With a total area of 14 hectares, the commercial zone still has attractive vacant commercial sites in some areas. The direct neighborhood to the already fully occupied commercial zone "Am Parir" offers interesting synergy effects.

Industrial tax multiplier	413.00 %
Area type	GE

### Links

<https://www.gistra.de>



Erreichbarkeit in 20 Minuten: 365.000 Einwohner

### Transport infrastructure

Freeway	A4	1 km
Airport	Köln-Bonn	63 km
Airport	Maastricht-Aachen	68.1 km
Port	Am Godorfer Köln	53.4 km
Port	Binnenhavenweg Stein (NL)	67.4 km

## EXPOSÉ

**Gewerbegebiet Am Steinchen**

**Ort: Langerwehe**

### **Contact person**

Daniela Schilling

Gemeinde Langerwehe

Bauamt

Schönthaler Straße 4

52379 Langerwehe

Germany

+49 2423409172

+49 2423409189

[dschilling@langerwehe.de](mailto:dschilling@langerwehe.de)

<http://www.langerwehe.de>

In cooperation with:



**Aachener Gesellschaft für Technologietransfer und Innovation AGIT mbH**

Frank Leisten

+49(0)241 963-1050

+49(0)241 963-1033

[f.leisten@agit.de](mailto:f.leisten@agit.de)

<http://www.agit.de>